

A large, stylized orange swoosh graphic with several curved lines and dots, resembling a stylized sun or a dynamic motion line, positioned behind the title.

COMPANY PROFILE

—

Ensuring the economic advancement of women by engaging in constructive business partnerships with leading business entities

You have to develop ways so that you can take up for yourself, and then you take up for someone else. And so sooner or later, you have enough courage to really stand up for the human race and say, 'I'm a representative.'
Maya Angelou

A large, stylized orange swoosh graphic with several curved lines and dots, similar to the one at the top left, positioned behind the contact information.

Web : www.epiworx.co.za
Phone : +27 11 234-0008
Email : info@epiworx.co.za

ABOUT US

We do thorough
research on investment
opportunities in order
to ensure long-term
success

Established in 2009 as a majority black women-owned investment company. Our mission is to be a value add partner, facilitating the empowerment of women through active and meaningful participation in business at all levels.



OUR VISION

To develop into the leading investment company, wholly owned and managed by women from previously disadvantaged communities, that engages in investments throughout the African continent.



OUR MISSION

To facilitate the empowerment of women through meaningful participation in business at all levels.



OUR VALUES

Our core values that we embrace, and which define our culture are:

- Integrity
- Honesty
- Commitment
- Accountability



OUR OBJECTIVES

To create an investment vehicle that would extend the empowerment of women as permanent shareholders, ensuring that black women are brought into the economic mainstream

To ensure the economic advancement of women by engaging in constructive business partnerships with leading business entities

To invest in companies which encourage active and meaningful participation and empowerment of women at all levels.

OUR CONSORTIUM PARTNERS

Epiworx's consortium partners are specifically chosen with the intention of forming collaborative diverse partnerships that positively benefit all parties. These partners share relevant skills, expertise and experiences in such a way that each member complements each other.

Our consortium partners leverage shared and specialist resources which benefit all parties.

Sharing resources enables us to offer a much wider investment portfolio and gives us the opportunity to access partner competencies allowing Epiworx a far more competitive advantage over other similar investment bodies.

Our collective bargaining and purchasing power as well as individual marketing efforts saves time and money and allows us to benefit with an expanded customer base which also gives us increased exposure to new revenue streams.



POWERMATLA

Power Matla (Pty) Ltd, an empowerment partner of choice to companies requiring a broad-based and or competent black partner to do business in South Africa and the rest of Africa.

Power Matla's board of directors and management team is made of highly experienced professionals from different backgrounds, namely politics, supply chain management, operations, engineering, marketing, finance and business in general.

www.powermatla.com



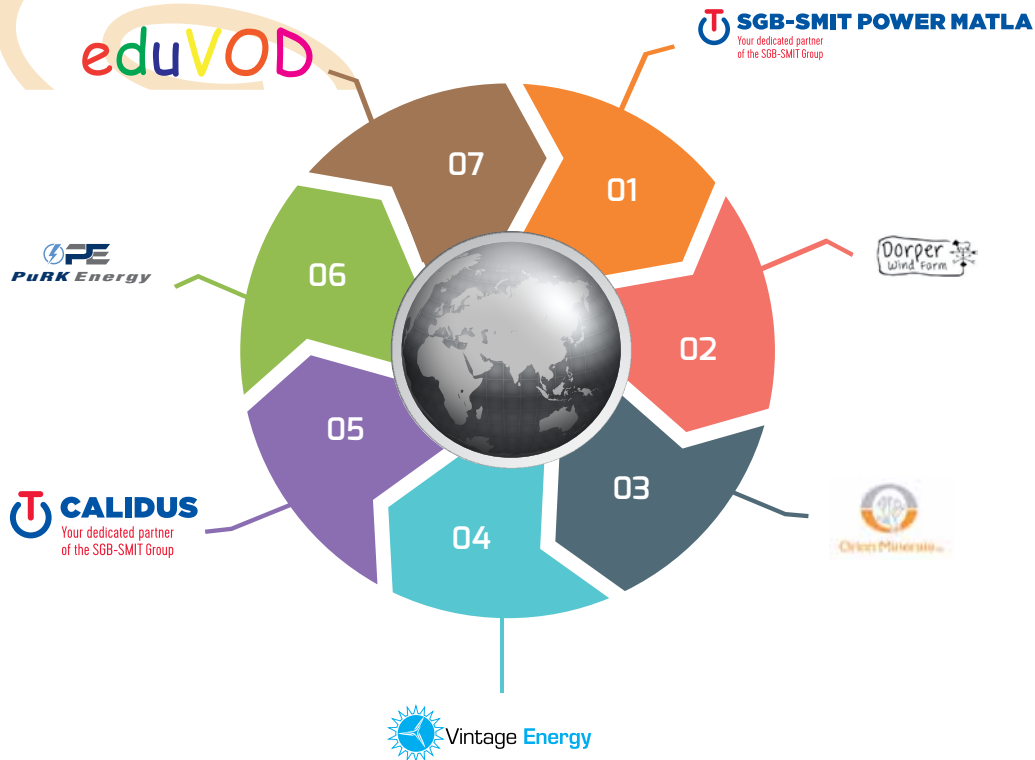
Empower a Thousand Holdings (Pty) Ltd (EaT Holdings) is an investment company established in 2006 to house trading companies which will undertake investment opportunities in various industries and projects. It is a 100% black owned company wherein the shareholding is 67.1% African women, 18% African men and 14.9% through a trust, with total women ownership in the company at 74.6%.

www.eath.co.za



OUR INVESTMENT PORTFOLIO

Epiworx's diverse investment portfolio featured below ranges from industries such as renewable energy, ICT (Information Communication Technology), Manufacturing, Infrastructure and Mining.



DORPER WIND FARM

Dorper Wind Farm (RF) Pty Ltd was selected as a preferred bidder under round 1 of the Renewable Energy Independent Power Producer Procurement Programme (REIPPPP) run by the South African Government's Department of Energy (DoE)

EDUVOD

Eduvod South Africa offers a content delivery and distribution solution developed to deliver e-Learning content to schools via the internet, satellite or terrestrial broadcast networks. The solution is hosted at a TV broadcast or data centre, and manages the receipt, processing and delivery of digital content assets over the broadcast network.

ORION MINERALS

Orion Minerals NL (ASX: ORN and JSE: ORN) is an Australian minerals explorer which is aiming to deliver shareholder value by exploring and developing its high quality portfolio of projects located in world class mineral provinces across the globe.

PuRK ENERGY

PuRK Energy's business focus is on energy and power sector project solutions targeting both renewable energy projects, waste to power projects which include co-generation and combined heat to power as well as biomass energy.

SGB-SMIT CALIDUS

SGB-SMIT CALIDUS supplies a complete range of transformer products which includes high density transformer board insulation; cylinders; spacers; angle rings; clack strips; clack blocks; stripes; clacks; ribs; end support; low density transformer board insulation; combie -outer collar; inner collar; din board-corrugated board; cylinder; strips. transformer press paper insulation; transformer accessories; tubes and cylinders as well as copper and aluminium strip and copper rods.

SGB-SMIT POWER MATLA

SGB-SMIT POWER MATLA has over 70 years experience in successful design, manufacturing, testing, installation and commissioning of a full range of power and distribution transformers which include large power transformers of voltages up to 765MVA..

VINTAGE ENERGY

Vintage Energy is committed to developing and providing Africa with clean and renewable energy in order to ease energy shortages as well as humankind's impact on the environment in Africa.

OUR INVESTMENT FOCUS

Epiworx's priority is committed to building long-term value for our shareholders and we look at acquiring controlling or strategic stakes in businesses that demonstrate the ability to deliver on objectives.

Our primary focal point is on businesses within the main sectors of the South African economy that have the ability to deliver sustained strong returns over a long period of time. We prefer to invest in businesses that show profitability and cash generating potential as well as having a diverse management team and potential market-leading positions.

Our primary target areas include the following sectors : Financial, infrastructure, mining, ICT, energy, manufacturing, logistics and distribution within the African continent.



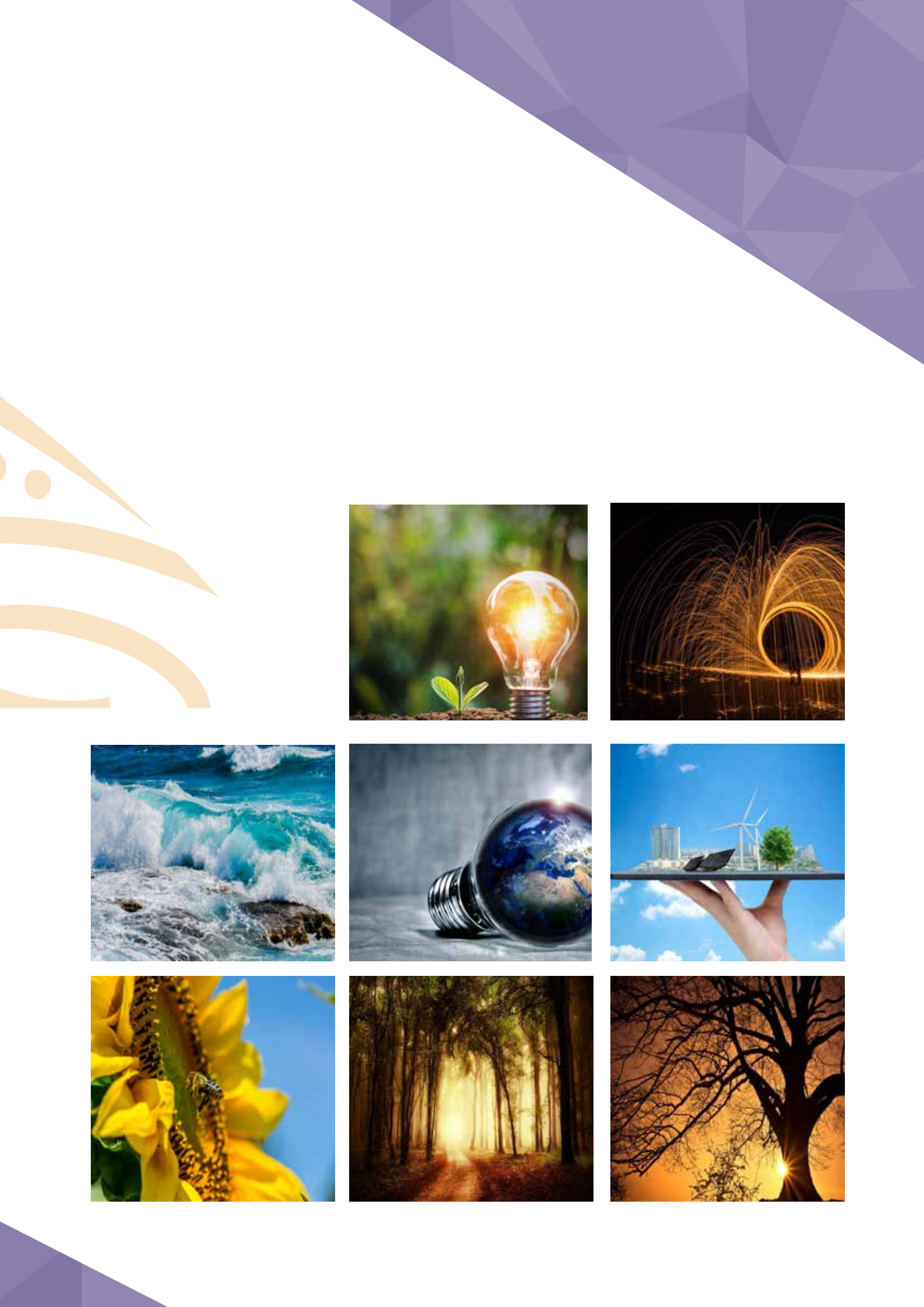
OUR DIRECTORS

SOPHIA NGOASHENG

Sophia holds a B.Com in Business Management and Economics , she is the Executive Chairperson and founder of Epiworx . While working she attended a Management Development Programme at Unisa School of Business Leadership.

Sophia commands an extensive knowledge of Supply Chain Management at operational and executive level, with seventeen (17) years in various companies including, Eskom, SASOL, Transnet, City Power, Rand Water, Gauteng Department of Finance, Anooraq Resources. She has solid experience in Supply Chain policy and strategy formulation and implementation.







Get In Touch

Epiworx (Pty) Ltd

+27 11 234 0008

+27 86 538 9857

info@epiworx.co.za

www.epiworx.co.za

Epiworx